

High-performance LED lighting solutions with perfectly matched components, specially designed for MRI scanning environments.



MRI Suite

Lighting Design Guide

Creating a safer environment and better experience for everyone



A photograph of an MRI suite interior, showing the large circular gantry of the MRI machine. The room is brightly lit with a cool, blue-toned light. The patient table is visible inside the gantry, and the overall atmosphere is clean and professional.

Capable of creating a calm, comfortable space

Enhancing the atmosphere of your MRI suite with quality lighting helps patients feel better and enhances staff performance. In addition, installing reliable, affordable LED solutions from Peachtree Lighting delivers continuous payback and improves the success of every imaging center.

Peachtree Lighting is focused on helping hospitals and medical centers realize the health benefits and business value of high-quality lighting. Our tailored MRI lighting solutions feature enhanced, controllable lighting, which helps caregivers during patient prep and helps reduce patient anxiety. The result is increased satisfaction for both groups. In addition, our solid-state components minimizing energy and maintenance costs.

Optimize your cost, comfort and control

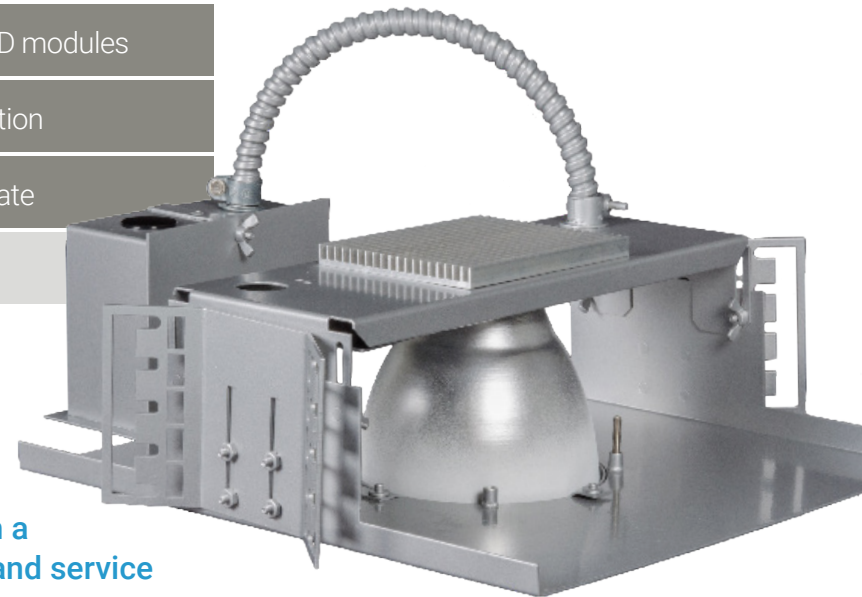
Peachtree Lighting understands that healthcare facilities, and especially diagnostic radiology and imaging suites, have unique and specialized needs. Our entire line of MRI lighting products complies with current standards and guidelines defined in the Illuminating Engineering Society RP-29 publication.

These guidelines, along with our own quality and performance standards, ensure that your Peachtree Lighting MRI solution provides an energy-efficient illumination, a comfortable atmosphere and optimum visibility for patients and staff.

Because we understand

the unique features that lighting must have to operate safely and reliably in a highly magnetized healthcare environment, all Peachtree Lighting MRI products offer:

- Complete system designed to work together
- Design flexibility for one to multiple suites
- Nonferrous downlights & sconces
- Energy-efficient, long-lasting LED modules
- Dimmable/controllable illumination
- Easy to specify, install and operate



Built in the USA with a spirit of innovation and service

When you buy from Peachtree Lighting, you get the assurance of knowing each fixture was designed, manufactured and tested against strict construction standards, right here in the USA, as it has been since 1989.

Products built to deliver performance and value, a company built around simplicity and efficiency.

The advantage of having everything under one roof

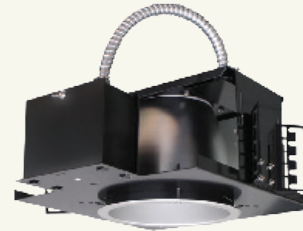
When you're expected to design and deliver a high-performance MRI lighting solution in weeks, not months, you need a company that can deliver worry-free performance on-time and on-budget. At Peachtree Lighting, we take pride in being the nimble specification-grade lighting company that professionals trust with their projects and reputation.

Our direct manufacturing and ordering system is not bogged down by the geographical, operational or service parameters of a larger business, so you get the fastest and easiest order fulfillment for parts and fixtures. Plus, our sales and product experts communicate directly with each other, offering Peachtree Lighting customers the most responsive service and coordinated support to quickly resolve any issue.

Our agile, hands-on business model means you get:

- High-quality, high-performance, specification-grade MRI suite lighting
- Simplified and streamlined communication in the production process
- Local, centralized expertise offers accessible service and support

Specialty Lighting for MRI Suites

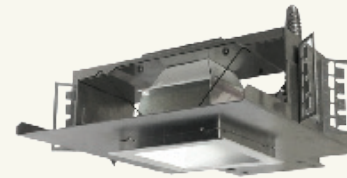


4BLRD-MRI

Product Description 4" LED DOWNLIGHT

Lumens 2,000

Color Temperature 3000K, 3500K, 4000K

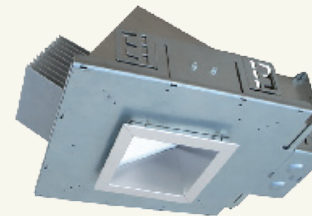


4BLSD-MRI

Product Description 4" LED DOWNLIGHT

Lumens 2,000

Color Temperature 3000K, 3500K, 4000K



4BLSW-MRI

Product Description 4" LED WALL WASH

Lumens 600

Color Temperature 3000K, 3500K, 4000K



6BLRD-MRI

Product Description 6" LED DOWNLIGHT

Lumens 2,000

Color Temperature 3000K, 3500K, 4000K



MIMO-L

Product Description 12" WALL SCONCE

Source Lumens 1,180

Color Temperature 4,000K

Other Lens Colors



6BLSD-MRI

Product Description 6" LED DOWNLIGHT

Lumens 2,000

Color Temperature 3000K, 3500K, 4000K

REQUIRED WITH SYSTEM



RDP

Product Description REMOTE DRIVER PANEL

Configuration DIMMING 0-10V

Capacity UP TO 8 FIXTURES (ANY)



6HLRA-MRI

Product Description 6" LED ADJUSTABLE

Lumens 1,800

Color Temperature 3000K, 3500K, 4000K

REQUIRED WITH SYSTEM



RFP

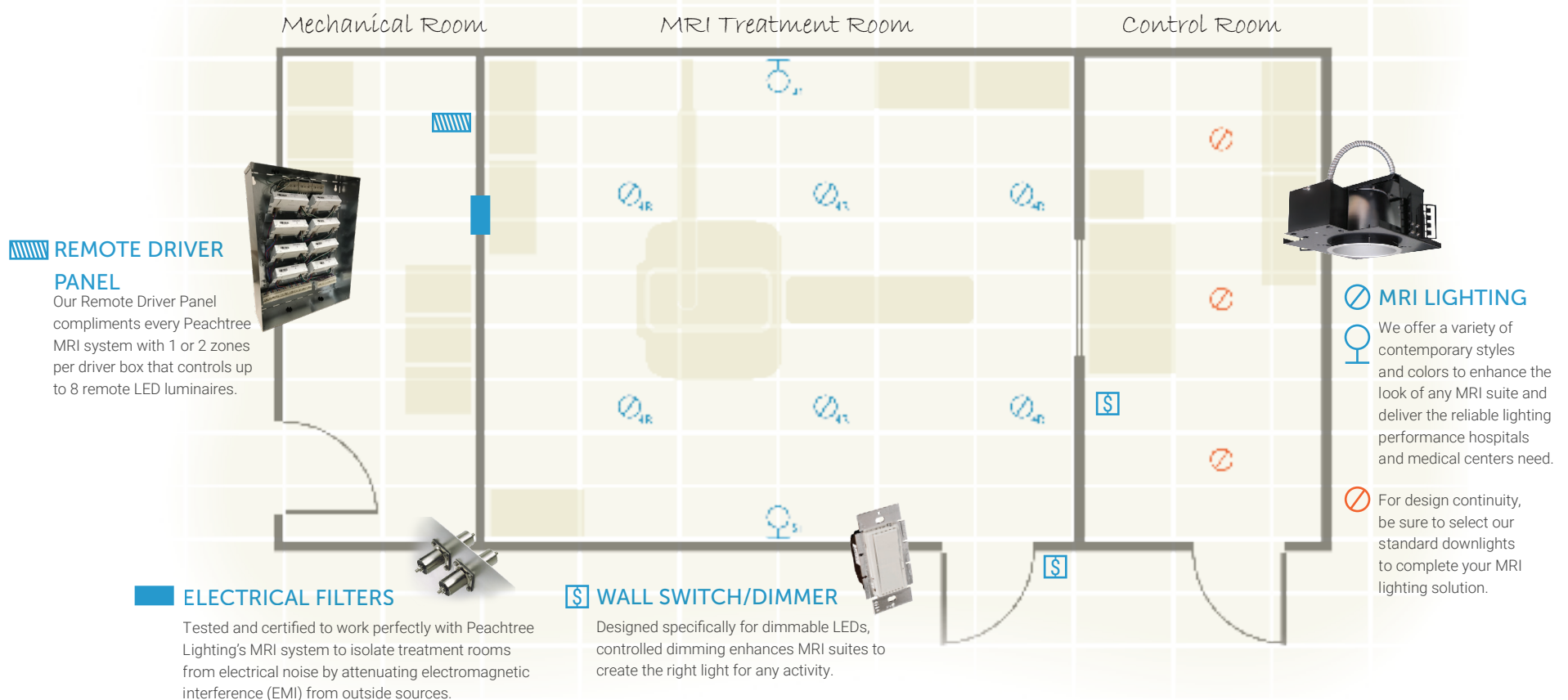
Product Description ROOM FILTER PANEL

Configuration SINGLE PANEL CONTAINS FILTERS FOR ALL TREATMENT ROOM FIXTURES.

A helpful guide to design your solution.















Follow these five simple steps for MRI lighting design success!

- 1** When designing MRI lighting, each suite has to be considered a separate project, due to a separate filter panel. One filter panel per room is required regardless of the number of fixtures and drivers.
- 2** Select your downlights and sconces from the lighting schedule. In a standard 12' ceiling, place downlights about 10' apart.
- 3** Determine the number of Remote Driver Panels (RDP) you will need. Each driver will power up to eight fixtures. For multiple zones, you will need one RDP per zone. (e.g. for 8 downlights and 4 sconces on separate dimming zones, you will need 2 drivers).
- 4** When configuring your filter panel, you will need two filters per fixture. One Peachtree RFP (Room Filter Panel) can accommodate all of the filters for a single suite. (e.g. for 6 fixtures in one suite, you will need one RFP-12).
- 5** Place a WSD (Wall Switch Dimmer) for each zone outside the treatment room door. An additional switch is also recommended in the control room.



LIGHTING SCHEDULE

Use this page to design your MRI suite lighting plan.


TYPE	CATALOG NO.	DESCRIPTION	QTY.
LUMINAIRES			
	4R	4BLRD-MRI-22 LED RECESSED DOWNLIGHT FOR MRI 4" ROUND	
	4S	4BLSD-MRI-20 LED RECESSED DOWNLIGHT FOR MRI 4" SQUARE	
	4W	4BLSW-MRI-08 LED RECESSED DOWNLIGHT FOR MRI 4" SQUARE WALL-WASH	
	6R	6BLRD-MRI-24 LED RECESSED DOWNLIGHT FOR MRI 6" ROUND	
	6S	6BLSD-MRI-18 LED RECESSED DOWNLIGHT FOR MRI 6" SQUARE	
	6A	6HLRA-MRI-18 LED RECESSED DOWNLIGHT FOR MRI 6" ADJUSTABLE	
	S1	12X12 MIMO LED WALL SCONCE FOR MIMO SUITES 12" SQUARE	
FILTERS (RFP-2 TO RFP-24)*			
	R-8	RFP-08 ROOM FILTER PANEL 8 LEADS FOR 4 LUMINAIRES	
	R-10	RFP-10 ROOM FILTER PANEL 10 LEADS FOR 5 LUMINAIRES	
	R-12	RFP-12 ROOM FILTER PANEL 12 LEADS FOR 6 LUMINAIRES	
	R-14	RFP-14 ROOM FILTER PANEL 14 LEADS FOR 7 LUMINAIRES	
	R-16	RFP-16 ROOM FILTER PANEL 16 LEADS FOR 8 LUMINAIRES	
	R-18	RFP-18 ROOM FILTER PANEL 18 LEADS FOR 9 LUMINAIRES	
DRIVER			
	D1	RDP REMOTE LED DRIVER FOR UP TO 8 LUMINAIRES	

* Consult factory for larger filter panels.

A large grid for designing the MRI suite lighting plan. The grid is composed of 20 columns and 20 rows of small squares, providing a space for users to place and arrange lighting fixtures according to their design requirements.

 sales@peachtreelighting.com

 PeachtreeLighting.com

 770-787-8490

 7230 Industrial Blvd. NE
Covington, GA 30014

**Peachtree Lighting &
IMEDCO® | Partners for
your success**

At Peachtree Lighting, we forge strategic partnerships with other manufacturing and technology innovators to produce the best possible lighting solutions. We don't select partners based on being first to market or the least expensive; we search for ambitious, innovative, and creative companies who best meet our quality standards and customer's needs.

This is the reason we work with companies like IMEDCO, a branch of the largest MRI shielding company in the world, to provide superior filters for MRI suite lighting. Their filters have been tested and validated to be compatible with our fixtures, so you can design a solution with confidence, knowing you have the support of two respected companies.

