

Type	Job. Ref.
------	-----------



# 5BLRD

5" LED  
Recessed Downlight

**1200 - 5500 Lumens**

## PRODUCT SPECIFICATION DATA

### MECHANICAL

- Precision formed 16 ga. galvanized steel ceiling pan with built-in plaster ring
- Accommodates up to 1 1/2" ceiling thickness
- Bar hangars accommodate 27" span
- Sustainable - electrical components accessible through aperture

### ELECTRICAL

- Serviceable and upgradable light engine.
- Power supply is overload and short circuit protected.
- See Lumens Column for standard dimming.
- Dimming options available: Dim to 1%; Dim to Black; and Triac

### OPTICAL

- Self-flanged lower reflector
- 45° cutoff to source
- Medium distribution standard.

### PERFORMANCE

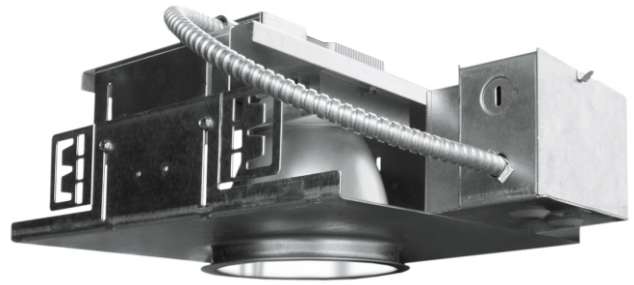
- CCT: 3000K; 3500K; 4000K @ 80+ CRI
- 70% lumen maintenance at 50,000 hours based on IESNA LM-80-2008.

### LISTINGS

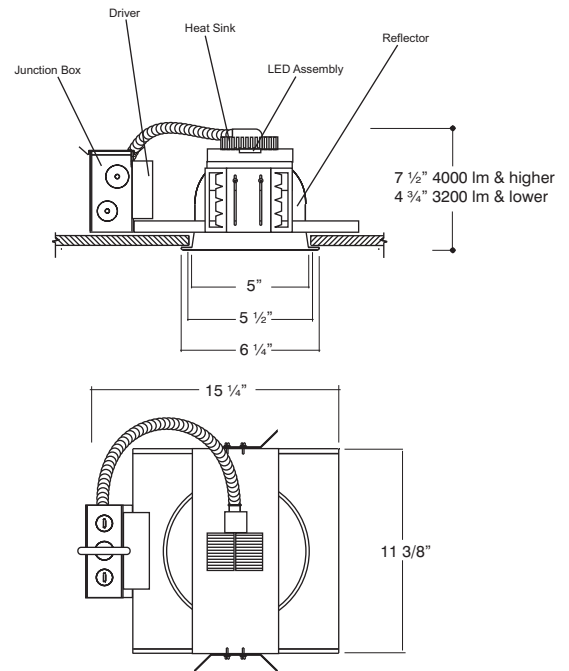
- ETL tested and listed to ANSI/UL1598 and CAN/CSA C22.2 No. 250.0-08
- Suitable for damp location
- For wet location use -WL option

### 5 Year limited warranty.

Dimensions and specifications in this literature are subject to change.



## LED



	DELIVERED LUMENS @ 35K	DIMMING	COLOR TEMPERATURE	CRI	REFLECTOR	REFLECTOR OPTIONS	OPTIONS	VOLTAGE
<b>5BLRD</b>								
<b>5" LED Round Recessed Downlight</b>	-55 5593 lumens <sup>1</sup>	-DMLV1 0-10v Dim to 1%*	-30K 3000 K	-80	-SH Soft Haze	-RC Reg. Clear Temp. Glass Lens	-F Fusing	-120 -277
	-42 4238 lumens <sup>1</sup>	-DMT1 Triac Dim to 1%**	-35K 3500 K	-90	-W Matte White*	-RCA Reg. Clear Acrylic Lens	-WL Wet Location (lens required)	
	-35 3278 lumens <sup>1</sup>	-DMB Dim to Black (0.1%***)	-40K 4000 K		-B Matte Black*	-RPA Reg. Prismatic Temp. Glass Lens	-EML1 Emergency* Generator Transfer Device	<b>Voltage MUST be Specified</b>
	-23 2316 lumens <sup>1</sup>	-ND No Driver (Order Remote Driver Panel (RDP) separately.)****			*Powder Coat	-TRW Trim Ring White		
	-17 1718 lumens <sup>1</sup>					-TRB Trim Ring Black		
	-12 1237 lumens <sup>2</sup>							
		*.12 option ONLY **-.12 thru -55 option ONLY ***-.12 thru -42 ONLY **** -55 ONLY						
	<sup>1</sup> 0-10v 1% Dimming Std. See OPTIONS for Triac Dimming							
	<sup>2</sup> 0-10v 10% Dimming Std. See OPTIONS for 1% & Triac Dimming							
			<b>DECORATIVE OPTIONS</b> ICE Suspended Clear/Etch Disk					
			-ICE Soda Lime Temp. Glass					
			-ICE-S SOLID Soda Lime Temp. Glass					
			-ICE-C Colorless Temp. Glass					
			-ICE-S-C SOLID Colorless Temp. Glass					
			-ICE-O Open Soda Lime Temp. Glass					
			-ICE-O-C SOLID Open Colorless Temp. Glass					
						Regressed Lens Holder is White Unless Specified Otherwise		
							*Emergency Options Use Remote Mount Test Switch	



5BLRD



# 5BLRD

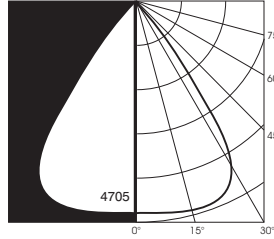
## 5" LED Recessed Downlight

### 5BLRD-50-35K

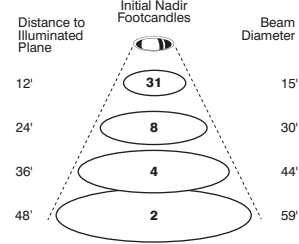
Test No: 77922.25 (calc)  
 Source: Chip on Board  
 Color Temp: 3500K  
 Total Fixture Lumens: 5080  
 S/MH: 1.0

Input Current  
 Voltage: Watts: Amps:  
 120 47 .39  
 277 47 .17

**CANDLEPOWER  
DISTRIBUTION CURVE**



**CONE OF LIGHT**

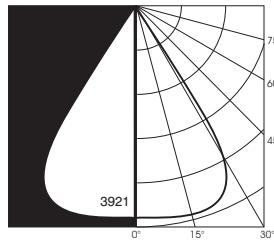


### 5BLRD-40-35K

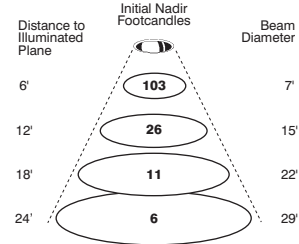
Test No: I7L7922 (calc)  
 Source: Chip on Board  
 Color Temp: 3500K  
 Total Fixture Lumens: 4233  
 S/MH: .92

Input Current  
 Voltage: Watts: Amps:  
 120 47 .39  
 277 47 .17

**CANDLEPOWER  
DISTRIBUTION CURVE**



**CONE OF LIGHT**

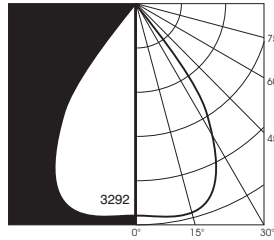


### 5BLRD-32-35K

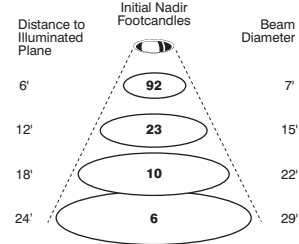
Test No: 77922.25 (calc)  
 Source: Chip on Board  
 Color Temp: 3500K  
 Total Fixture Lumens: 3369  
 S/MH: 1.06

Input Current  
 Voltage: Watts: Amps:  
 120 51 .43  
 277 51 .18

**CANDLEPOWER  
DISTRIBUTION CURVE**



**CONE OF LIGHT**

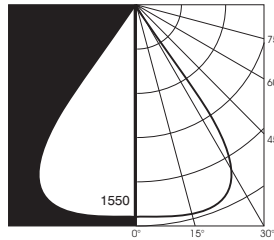


### 5BLRD-17-35K

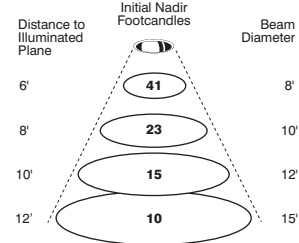
Test No: I7L7921 (calc)  
 Source: Chip on Board  
 Color Temp: 3500K  
 Total Fixture Lumens: 1704  
 S/MH: .91

Input Current  
 Voltage: Watts: Amps:  
 120 29 .24  
 277 29 .10

**CANDLEPOWER  
DISTRIBUTION CURVE**



**CONE OF LIGHT**



This Peachtree LED product is baseline tested at 3500K and 80+ CRI. When a warmer or cooler color temperature or 90+ CRI is specified, the light output values will vary. Use the following charts to adjust the values for your application.

CCT LUMEN CONVERSION	
3000K	4000K
.98	1.04

CRI CONVERSION
90+
.88

**Wattage by Lumen Package**

-55 = 50.6w	-22 = 27.0w
-42 = 48.7w	-17 = 18.7w
-32 = 23.8w	-12 = 12.7w

**\*DISTRIBUTION PERFORMANCE**

Distribution lenses reduce delivered lumens by the following:

Distribution	Loss
Narrow	23%
Medium	34%
Wide	36%
Wall Wash	34%

